

**THE BIBLE  
KEY TO UNDERSTANDING  
THE EARLY EARTH**



**Dr. G.S. McLean  
Roger Oakland  
Larry McLean**

# THE CANOPIED EARTH

The Bible indicates in the first chapter of Genesis that the original earth was very much different from the earth as we know it today. (Figure 19) One of the important features mentioned, is the presence of an envelope or layer of water surrounding the earth. Genesis Chapter 1:6-7 states:

*“And God said, Let there be a firmament in the midst of the waters, and let it divide the waters from the waters. And God made the firmament, and divided the waters which were under the firmament, from the waters which were above the firmament: and it was so.”* K.J.V.

Examining these two verses in more detail, will help give us a better understanding of what the Bible tells us the original earth was like. We are told that a ‘firmament’ divided a layer of water which was above, from a layer of water below. (Figure 20) The word ‘firmament’ is referring to the atmospheric layer surrounding the earth. The scriptures clarify this in verse 20 by stating:

*“Let the waters bring forth abundantly the moving creature that hath life, and fowl that may fly above the earth in the open firmament of heaven.”*

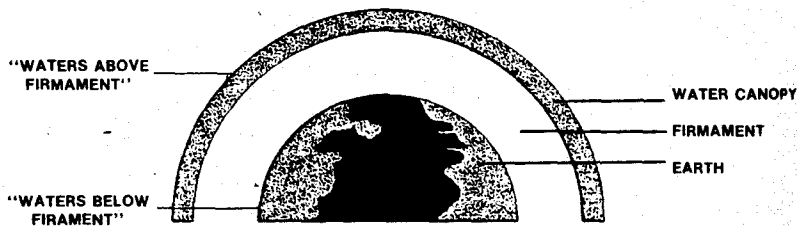
The condition described to us in these two verses could best be illustrated as a ball of water surrounding the earth. As a result of this unique situation, the earth would be protected by a canopy of water which would produce a subtropical greenhouse effect.

## The Greenhouse Effect

The presence of a layer of water surrounding the original

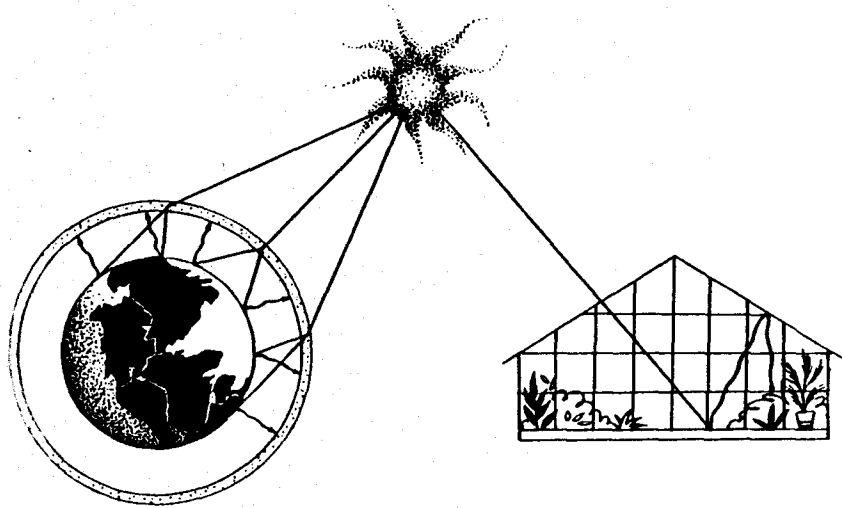


*Figure 19:*  
 According to the Bible, the original earth was surrounded by a layer of water. This diagram illustrates what the canopied earth may have looked like from a viewpoint in outer space. A section of the canopy has been removed to show the three dimensional perspective.



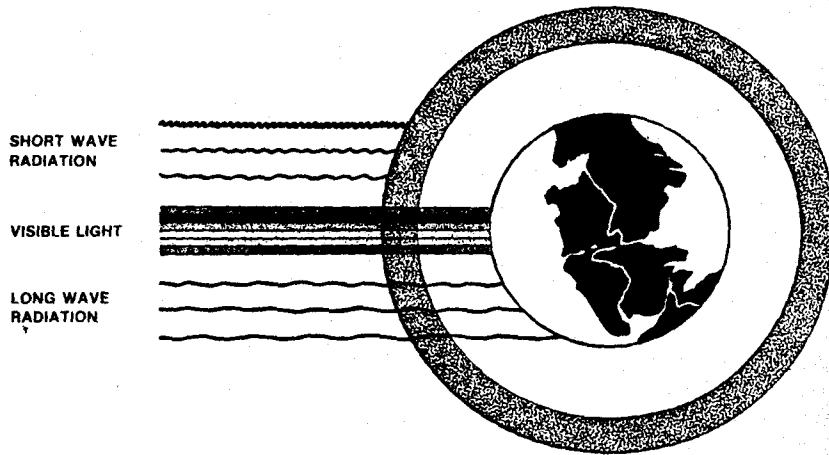
*Figure 20:*  
 A sectional view of the canopied earth illustrates the separation of the earth from the watery layer by a firmament.

earth would produce a number of environmental factors very much different from what our present earth experiences. In order to better understand the canopy model, let's examine some of the features which a layer of water around the earth would produce.



*Figure 21:*

*The presence of a watery canopy surrounding the original earth would have provided a greenhouse effect. Long wave radiation from the sun would pass through the water canopy and be scattered in many different directions. Radiated heat from the earth's surface in the form of short wave radiation would be trapped inside the canopy creating conditions similar to the environment produced in a greenhouse. Subtropical environment conditions would have existed from pole to pole.*



*Figure 23:*

*A watery layer around the earth in the past would not allow the passage of harmful short wave radiation to reach the earth.*

Short wave radiation is extremely harmful to life. As well as causing degenerative genetic changes to take place within the chromosomes of cells, short wave radiation is responsible for accelerating the aging process. Under the protection of a canopied earth, we should find that plants and animals could grow much larger, be healthier, more vigorous, and live longer life spans.

### **Evidence For A Canopied Earth**

As with any other model or theory, the authenticity or the degree of acceptance, can only be measured by testing it against the observable evidence. We have looked at some of the major environmental conditions created by a layer of water surrounding the earth. Now we will look at some of the evidence which lends credibility to the model of the canopied earth.

### **Subtropical Life From Pole To Pole**

The canopy model suggests subtropical life would have lived from pole to pole as a result of uniform temperate conditions all over the world. Is there any evidence to indicate life lived under these kind of conditions in the past? Examining the fossil record gives us numerous examples of organisms which have lived in the past. It soon becomes obvious that climatic conditions must have been very much different in the past than they are today.

For example, fossils of palm tree leaves have been found on the northern tip of Vancouver Island, Canada. (*Figure 24*) These leaves are found encased in volcanic rock, indicating they were destroyed as a result of being quickly covered over by a volcanic eruption. Certainly, this type of subtropical vegetation does not grow in this area today. Obviously, the climate must have been much different in this area in the past.



*Figure 24:  
This fossilized imprint of a portion of a palm tree leaf was found near Port Hardy, British Columbia, Canada. The leaf has been encased by a flow of molten volcanic rock.*

Another area we could look at is the New Siberian Islands, situated north of Russia, within the Arctic Circle. (*Figure 25*) Scattered throughout these islands are found the remains of tropical forests, gigantic fruit trees with green leaves and fruit frozen in the ice, as well as the remains of mammoths and other mammals. Obviously, this kind of life does not exist in this part of the world today. These findings were reported in the book, The Mysteries Of The Frozen Mammoths, page 76, written by Charles H. Hapgood.

The Spitzbergen Islands, north of Norway, and also within the Arctic Circle, is another area where subtropical life has been found preserved. Donald Patten, on page 110 of his book, The Biblical Flood And The Ice Epoch, mentions palm tree leaves ten to twelve feet in length have been found in a fossilized condition in this area, and also fossilized subtropical marine life of various kinds. (*Figure 26*)

Numerous finds have been made in Alaska to indicate life was much different in that area in the past than it is today. The National Geographic issue of March 1972, has an interesting article about the Alaskan tundra. In this article, the reader is told about the remains of gigantic camels, lions, horses, mammoths, tigers, sloths and bison found frozen in layers of ice and mud. (*Figure 27*) Life like this does not live in this part of the world today, yet as the evidence reveals, it did in the past.

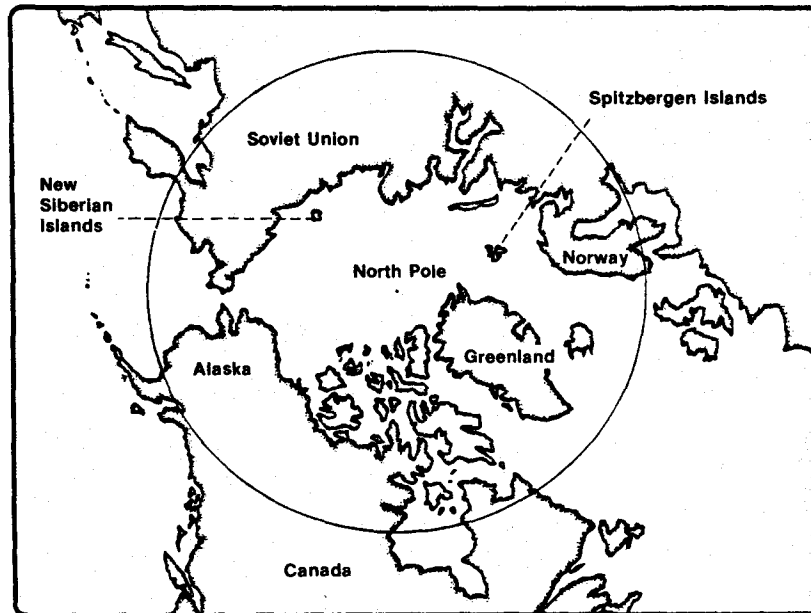
In the extreme southern hemisphere, very near the South Pole, the fossilized remains of luxuriant forests with tree trunks over three feet in diameter have been found. This is reported on page 44 of the book, Those Astounding Ice Ages, by Harker. Trees do not grow in this area today. Once again, the observable evidence confirms the Biblical model of a ~~canopied~~ earth. Subtropical vegetation and animal life in the ~~past~~ has lived from pole to pole.

### **Large Plants And Animals**

What about the suggestion that plant and animal life would



be much larger in the past? If a canopied earth existed in the past, there should be numerous examples of gigantic plants and animals occurring in the fossil record. Let's look at some of these examples.



*Figure 25:*

*A prominent feature of the fossil record is the abundance of fossils within the polar regions which are characteristic of life living in a subtropical environment. Obviously, the climatic conditions in the polar regions must have been much different in the past than exist today.*



*Figure 26:*  
*Fossilized remains of subtropical marine organisms have been found in the Spitzbergen Islands. These islands are located north of Norway and within the Arctic Circle.*



*Figure 27:*  
*This frozen baby mammoth was dug out of the Arctic muck by Alaskan miners searching for gold. These great animals are often found with the last mouthful of food they were eating still in their mouths, indicating the freezing process must have occurred instantly.*

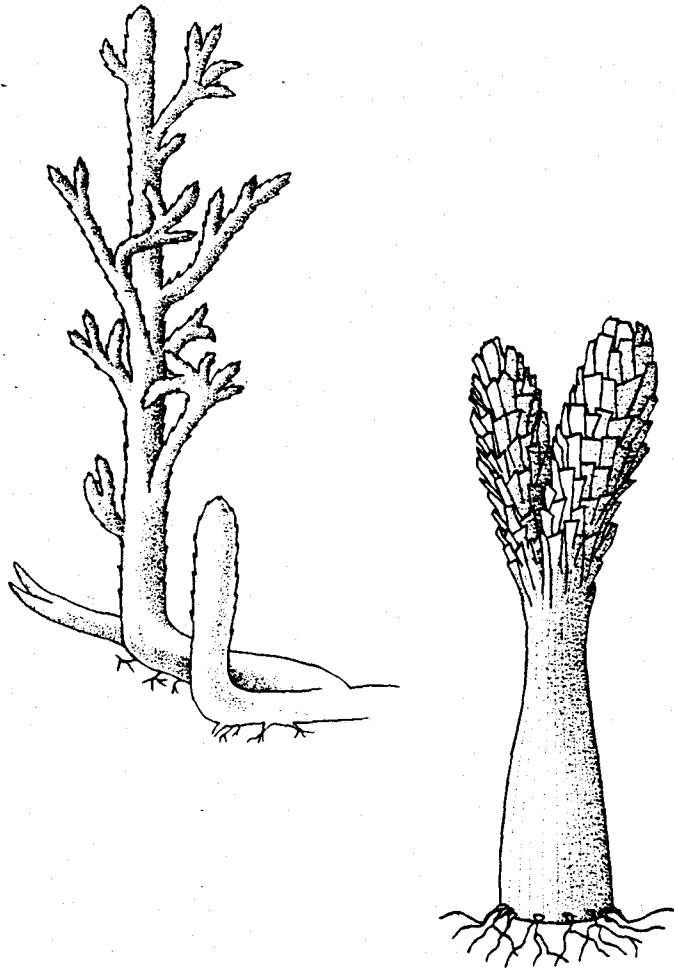
The book, The Green Kingdom, published by Childcraft, illustrates a number of drawings of plants that lived in the past. These drawings are based on information gathered from the fossil record. (*Figure 28*) On page 206, moss-like plants which grew nearly three feet tall are shown. Today, moss plants grow approximately two or three inches tall. On page 209, plants that look like huge asparagus stalks are shown. They grew over forty feet tall. The root systems of these plants are similar to the hair-like root systems of onion plants we see today. Obviously the roots of these plants did not have to go deep into the soil in order to get moisture, nor anchor themselves against winds and storms.

Horsetail reeds have been found in the fossil record that grew over fifty feet tall. Today the horsetail reed grows in marshy areas but only to a maximum height of four or five feet. Fern like plants grew in the past to heights of over fifty feet high, compared to the bush sized plants of today.

Insects have been found in the fossil record that are much larger than their counterparts of today. For example, cockroaches have been found one foot in diameter; dragonflies have been preserved with a wing span of three feet. (*Figure 29*)

Fossil remains of marine organisms are often much larger than their counterparts of today. In the Sundance Canyon, near Banff, Alberta, Canada, fossil clams have been found over two feet in length. Nautiloid shells have been found in the fossil record that are over nine feet in diameter. (*Figure 30*) Today, their existing ancestors are only about eight inches in size.

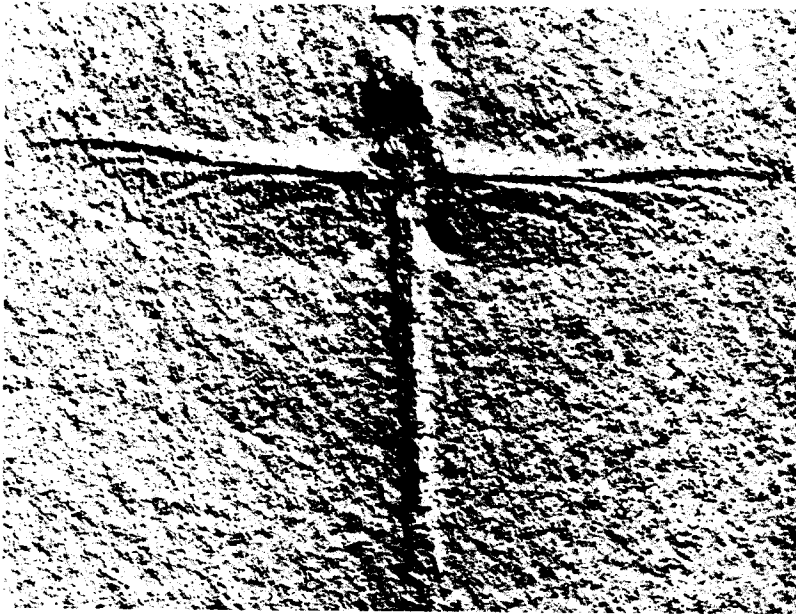
Giant animal fossils of many different kinds have been found all over the world. A book called Giants From The Past, published by the National Geographic Society, shows many of these huge creatures of the past no longer existing today. Fossil remains of the hornless rhinoceros indicate it was over 17 feet tall. (*Figure 31*) Pigs grew to be the size of cattle; camels were over 12 feet tall; huge birds towered to a height



*Figure 28:*

*The fossil record shows that plants living in the past were very different than plants living on earth today. Moss-like plants grew over three feet in height compared to the few inches they grow today. Plants that look like asparagus stalks grew over forty feet in height, yet were supported by a very delicate root system.*

of over 11 feet; giant beavers grew to be the size of a pig; deer antlers measured over 12 feet in width. Ground sloths which grow to the size of an average monkey today, have been found in the fossil record over 18 feet in length. (*Figure 32*)



*Figure 29:*  
The fossil record shows that dragonflies that lived in the past had wing spans as wide as three feet.

One of the most prominent features of the fossil record is the abundance of huge reptile creatures. (*Figure 33*) The most common reptile of the past is the dinosaur. Reptiles begin life by hatching from an egg, then growing larger and larger each year. The longer a reptile lives, the larger it gets. The dinosaur is one of the largest creatures that has ever lived on the face of this planet. In order for dinosaurs to have grown to the tremendous size as revealed by the fossil record, their life spans must have been much longer than reptile life spans of today. The protective canopy would certainly help to explain why the animals of the past grew larger and lived longer.

### **The Life Span Of Man**

If the canopy model is correct, then there should be evidence to indicate the life span of man was much longer in the past. As we look at the scriptural account of the genealogies of men who lived upon the early earth, we see the average life span of original man was much longer than the average life span of man today.

If we look at a chart showing the life spans of men from Adam to Isaac, we would see a definite contrast for those who lived before, and those who lived after the flood of Noah. (*Figure 34*) The Bible mentions in Genesis chapter five, the average age of men who lived before the flood was approximately 900 years. After the flood, there is a marked deterioration of the long life spans. Within a 600 year period, the longevity of life tapers from the 900 year average down to approximately 175 years in length.

The canopy model helps us understand why man lived so long before the flood. At the time of the great flood of Noah, the canopy collapsed in upon the earth and provided one of the sources of the flood waters. The pre-flood earth canopy protected man from the harmful short wave radiation from the sun, which is known to accelerate the aging process. After the flood, when the canopy was gone, the earth would have been exposed to short wave radiation and life spans would

drop off sharply. As time has gone on, the short wave radiation would continue to cause degeneration to the genetic blueprints of life, and be passed on to subsequent generations. The aging process would continue to accelerate. Today the average life span of man is approximately 70 to 80 years of age, nowhere close to the 900 years that men were living before the flood.

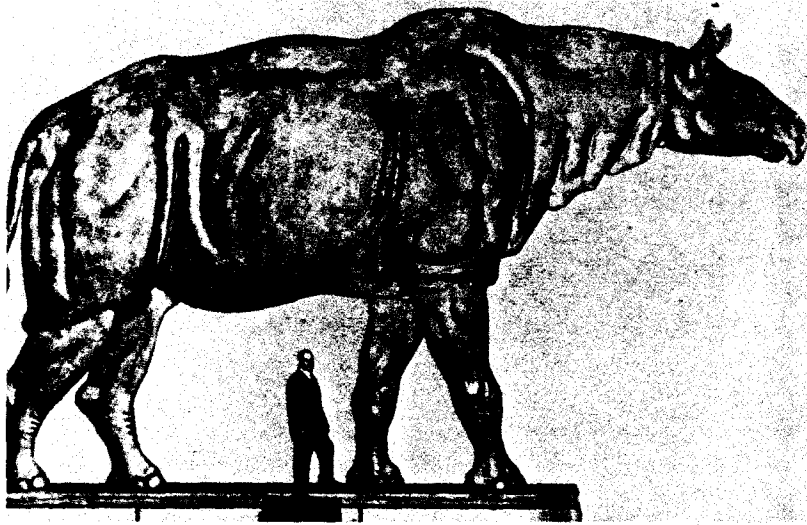
Once again, we see the Bible has given us keys for understanding things which took place in the past. The scriptural insight into a pre-flood canopied earth, helps us understand the longevity of early man as recorded in the Bible and also many of the questions which result from observing the fossil record.

F  
T  
C  
C



*Figure 30:  
The fossilized remains of a nautiloid shell found in the foothills  
of the Canadian Rockies reveals the gigantic size of these  
creatures in the past. Nautiloid species living today are usually  
only several inches in diameter.*

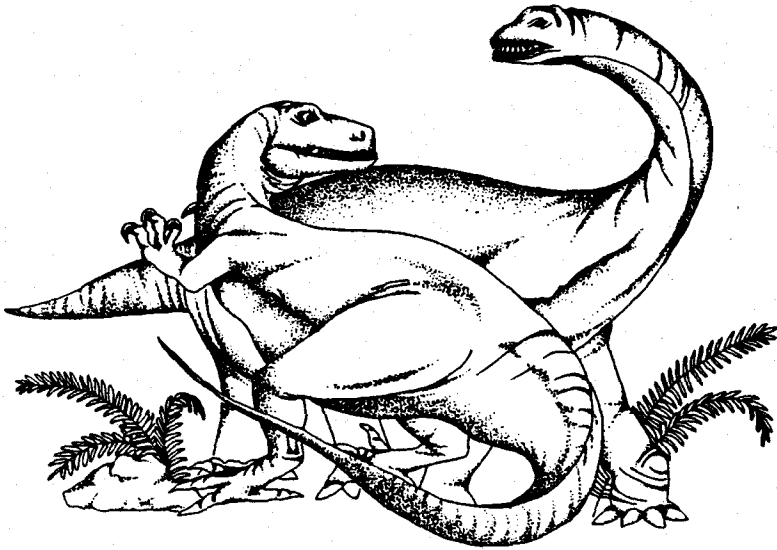




*Figure 31:  
The hornless rhinoceros of the past grew to be over seventeen feet tall. This creature is the largest land mammal that has ever lived.*



*Figure 32:  
This huge vertebra which is on display at the Glen Rose, Texas  
Museum is claimed to be from the backbone of a giant sloth  
of the past.*



*Figure 33:*

*Dinosaur fossils are found in numerous locations around the world. These huge reptiles are representatives of one of the largest forms of life that have ever lived upon the face of the earth.*

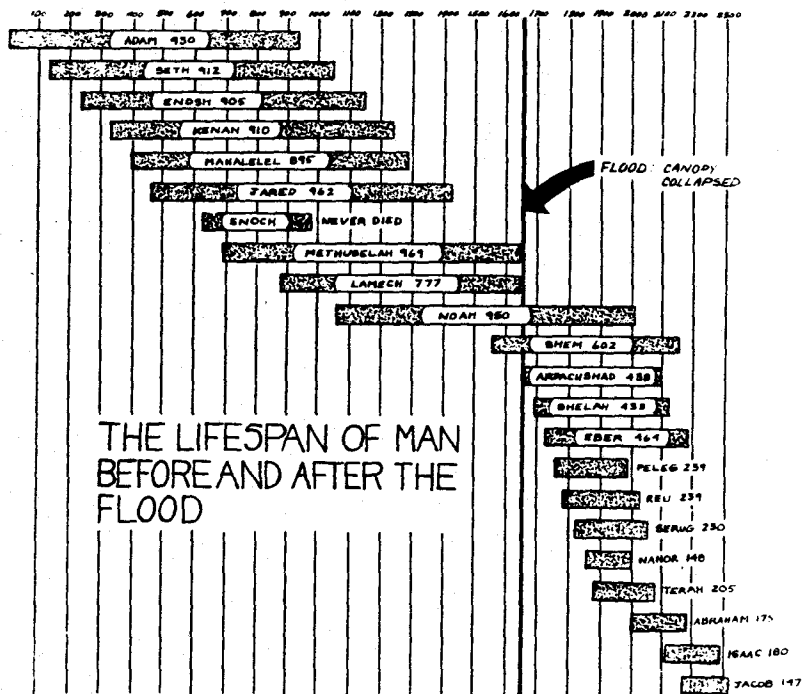
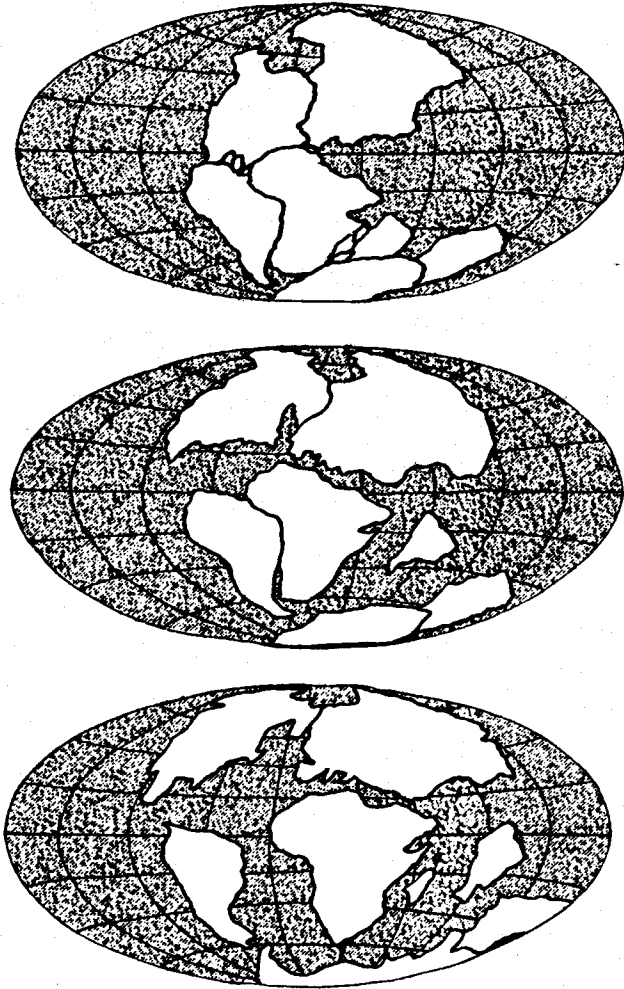


Figure 34:  
 This chart depicts the Biblical account of the age of men living before and after the flood of Noah. It is apparent that the life span decreases after the time of the flood. It would appear the extremely long life spans before the flood could be attributed to the filtering of harmful radiation as a result of the presence of a watery canopy.



*Figure 35:  
Conventional geological theory teaches that 200,000,000 years ago land mass was together in one place. Over the proposed millions of years of time, the one land mass broke apart and gradually separated to the position the continents are found today.*

# THE ONE LAND MASS

Another very important feature of the original earth the Bible tells us about, is the land mass was all together in one location. Today, when we look at a geographic map of the earth, it is apparent the land mass is divided into several continental bodies. Let's examine the scriptures in order to find out more about what the original earth was like and look at the events which took place to bring about the division of the continents, as we know them today.

The insight the Bible gives us regarding the formation of the original land mass is stated in Genesis 1:9-10:

*“And God said, Let the waters under heaven be gathered together unto one place, and let the dry land appear: and it was so. And God called the dry land earth; and the gathering together of the waters called He seas: and God saw that it was good.”* K.J.V.

From these two verses of scripture it is apparent the land mass was together in one place at the time of creation.

## The Evidence From Geology

For generations, individuals who have studied maps of the world, have noticed the eastern and western hemispheres fit together like pieces of a jigsaw puzzle. In the early 1900's, some geologists proposed that the continents had been joined together at one time in the past history of the earth. They pointed out the coastlines of Africa and South America have similar geological layers containing identical fossils of plants and animals.

Geological discoveries made over the past several decades have confirmed the earth's land mass was originally all together in one place. This of course agrees with the account

we are given in the Bible. However, the geological theory for the separation of the continents, takes place over a time period of hundreds of millions of years. Keep in mind that the foundational principle of modern geology is based on the assumption the earth is billions of years old.

The most popular theory proposed by geologists for the origin of the continents is the theory of continental drift. This concept, often called global plate tectonics, has challenged the traditional evolutionary concept of a stable planet. Such a theory in the past would have been totally rejected, yet today it is widely accepted as a geological truth. The concept of plate tectonics advances the following view of the earth's history:

1. The earth's crust consists of several plates or sections. These plates could be compared to a cracked shell of a hard boiled egg. The plates float on the hot molten mantle which is beneath them. The earth's land surface and the ocean bodies, rest upon these sections of the earth's crust.
2. Some 200 million years ago the earth's land mass was altogether in one location. (*Figure 35*) This super-continent has been often called Pangaea. For some reason, the one large land mass began to split up and gradually separate.
3. Over millions of years of time, the seven continents and the numerous major islands we observe today, were gradually moved into their present positions.

The question of how and why the continents divided over two hundred million years ago is often discussed. Science News, April 7, 1976, reported that a sudden event broke the continents apart. Recent theories have proposed that an object of cosmic origin may have slammed into the earth, causing the initial separation.

### **The Biblical Account Of The Division Of The Earth**

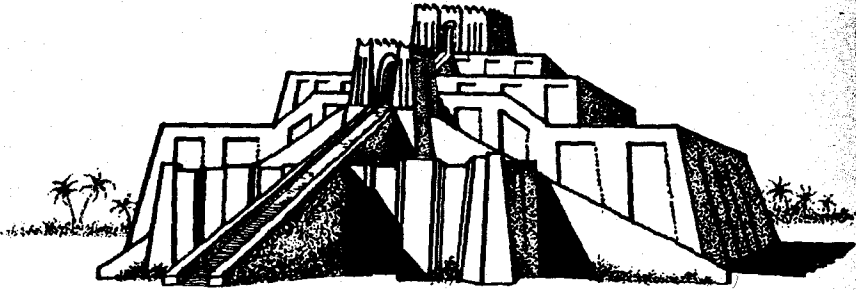
The Biblical account of the division of the earth differs from the geological theory of division by the important factor of

time. According to the Bible, the earth was divided in the days of a man named Peleg, who lived shortly after the period of time when the Tower of Babel was constructed. Genesis 10:25 states: "And unto Eber were born two sons: the name of one was Peleg; for in his days was the earth divided."

The Tower of Babel incident is described in detail in the Bible. (*Figure 36*) At this time, man was beginning to repopulate the earth following the global flood of Noah. Genesis chapter 11 describes the events which took place in the land of Shinar, as man attempted to build a city and a tower to reach into the heavens. God had instructed man to scatter over the entire earth, but man chose to rebel against God. In order to bring an end to the construction of the Tower of Babel, God confounded their language, and scattered them abroad. Following the scattering of the people over the surface of the earth, God divided the one land mass. This occurred during the days of Peleg.

The word "Peleg" in the Hebrew, means a sudden division, or a canalling by water. Certainly such a division of the earth's one land mass would bring about tremendous catastrophic events. The initial division of the land mass would not have separated the continents as far apart as they are today. As we shall see later, the Biblical account for the history of the earth mentions numerous other global catastrophes which would have altered the earth's geography in recent historical times.





**Figure 36:**  
*According to the Biblical account of the history of the earth, the division of the one land mass took place only a few thousand years ago. This was at a period of time shortly following the building of the Tower of Babel.*

## THE CREATION OF THE HEAVENLY BODIES

The Biblical account of origins specifically mentions the creation of the heavenly bodies. Everyone, at one time or another has looked up to the heavens and wondered how the heavenly bodies came into existence. (Figure 37) According to the Bible, the heavenly bodies were created on the fourth day of creation. Genesis 1: 14-17 mentions the creation of the heavenly bodies and the purpose for which they were made:

*“And God said, Let there be lights in the firmament of the heaven to divide the day from the night; and let them be for signs and seasons, and for days and years: And let them be for lights in the firmament of the heaven to give light upon the earth: and it was so. And God made two great lights; the greater light to rule the day, and the lesser light to rule the night: He made the stars also. And God set them in the firmament of the heaven to give light upon the earth.”* K.J.V.

One of the main purposes for the sun, moon and the stars was the production of light for the earth. Thus when God created these heavenly bodies, in order for light to shine upon the earth, He created them with the light spanning the distance from the heavenly body to the earth.

According to the Bible, God created things in maturity. Adam was created as a mature man, and not as a little baby. Trees were created as mature trees, and not as little seedlings. Thus, when God created the heavenly bodies for the purpose of giving light to the earth, that purpose was fulfilled from the moment they were created.

A common question creationists are often asked deals with the long distances light must travel to the earth from the far

away stars. If the creationist believes the earth is approximately 6000 years old, how do you explain the existence of light we see coming to the earth from stars millions of light years away? As previously mentioned, the purpose of these heavenly bodies was to give light to the earth. From the very moment the heavenly bodies were created, light immediately spanned the distance from the heavenly body to the earth.



*Figure 37: According to the Bible, the heavenly bodies were created during the fourth day of creation. One of their main purposes was to give light to the earth.*

# THE CREATION OF LIFE

Another very important premise of the creation model is the creation of life. Genesis chapter one mentions God brought living things into existence on the third, fifth and sixth days of the creation week. Although the scriptures do not give a detailed description of every kind of plant and animal created, we are told that all living things on the earth appeared by the creative hand of God.

All life would have come on the scene suddenly, mature and fully developed. There would have been many more kinds of life present at the time of creation, than what now exists on our planet. The greenhouse-like environment that was produced by the canopied earth, would have provided optimal conditions for all kinds of life. Many forms of life would grow larger and be more vigorous. When we examine the evidence from the fossil record, that is exactly what we find. There were many more kinds of life preserved in the fossil record, than life that exists today. All kinds of life appear in a sudden profusion of complex perfected forms, with no simpler ancestral forms preceding them. To any honest open minded observer, the vast fossil evidence from all over the world confirms the Bible record of Creation.

## After It's Kind

One of the most important features the scriptures mention regarding the creation of life, is the principle that life was designed with the built in mechanism of reproducing "after it's kind". In each verse of Genesis chapter one that God mentions the creation of life, God specifically mentions the created form of life would "bring forth", or reproduce after its own kind.

The scriptures clearly indicate life was created according to kinds. The kinds of life were outlined by specific genetic

boundaries. The blueprints of life originally formed by the plan and design of the creator, provided limits for variation, as the perpetuation of life took place from one generation to the next. For example, a dog would always reproduce by having puppies; cats would have kittens, and so on. Never could one kind of life change and become something else. A dog would never have offspring, that could suddenly develop wings and begin to fly.

According to this model, there would be a wide variation within a kind. (*Figure 38*) The instructions for the coding of life contained within the chromosomes, can provide multiplied forms of variation, within certain limits. We know the human kind is made up of a variety of characteristics. There are many different features producing a wide variation in physical appearance, yet all these variances still belong within the human kind.

The dog kind is made up of many different sizes and shapes. It has been illustrated through the process of selective breeding, that over 200 different varieties of dogs could be produced from one set of parents. The observable evidence indicates life can vary tremendously within a kind, but one kind can not change and become another. As we shall see later in this book, the theory of evolution is based on the premise that life develops and changes from simple forms to complex forms over long periods of time.

Another principle regarding the creation of life is that living things would have been coded with instinctive abilities and qualities from the very beginning. In other words, from the moment life came on the scene, it was programmed with the necessary information required to perform various functions essential for life. Take for example, a particular kind of animal behavior such as building a nest. A mother robin never has to teach it's offspring the technique of building the kind of nest suitable for robins. The next generation always knows instinctively how to build a robin's nest. The robin doesn't dig a badger hole or construct a swallow's nest; the robin always builds a robin's nest. The Biblical model suggests the

knowledge and the ability to carry out many of life's requirements were in operation from the beginning. These were not things which had to be learned over long periods of time by trial and error.

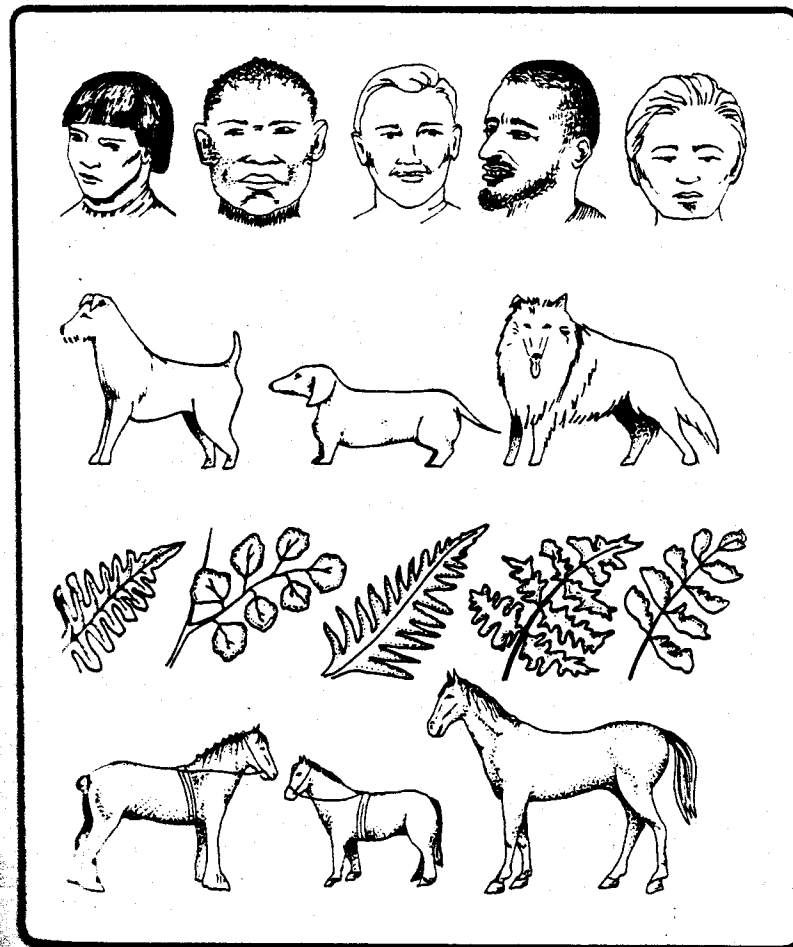


Figure 38:

The Biblical model of Creation teaches that life was created according to "kinds", and that each kind would reproduce within specific genetic boundaries. A kind would be capable of exhibiting a wide variation of characteristics, but could not change and develop into another kind.

# THE CREATION OF MAN

The creation of man took place on the sixth day of the creation week. Man was the focal point of the entire creation. Genesis 1:26-27 states:

*“And God said, Let us make man in our image, after our likeness: and let them have dominion over the fish of the sea, and over the fowl of the air, and over the cattle, and over all the earth, and over every creeping thing that creepeth upon the earth. So God created man in His own image, in the image of God created He him; male and female created He them.”* K.J.V.

The Bible tells us man was created in the image of God. That does not necessarily mean that man had the same appearance as God, as we would understand physical features such as eyes, ears and other bodily characteristics. It means man was created with abilities, attributes and capacities like God. Man could think, feel, understand and appreciate like God. As a result of being designed with these kinds of characteristics, man was a God-like being.

Original man was coded with wisdom, knowledge and understanding from the very beginning. Adam and Eve, the first man and woman upon the earth, would have been the most intelligent human beings that have ever existed. Original man was designed to use one hundred per cent of his brain, not just the fraction of the brain's capacity that is used today by modern man. Adam and Eve did not start out as primitive brute like beings. They were coded with complete knowledge, wisdom and appreciation for the things of creation from the very beginning.

The most important aspect of the creation of man is that God made man as an intelligent being with a free will. Man

was free to choose whether or not he would love, obey and fellowship with his Creator. Man was not designed as a robot to be forced into a love relationship with God. A love relationship can only be established when there is a choice made by a willful decision by the two partners involved.

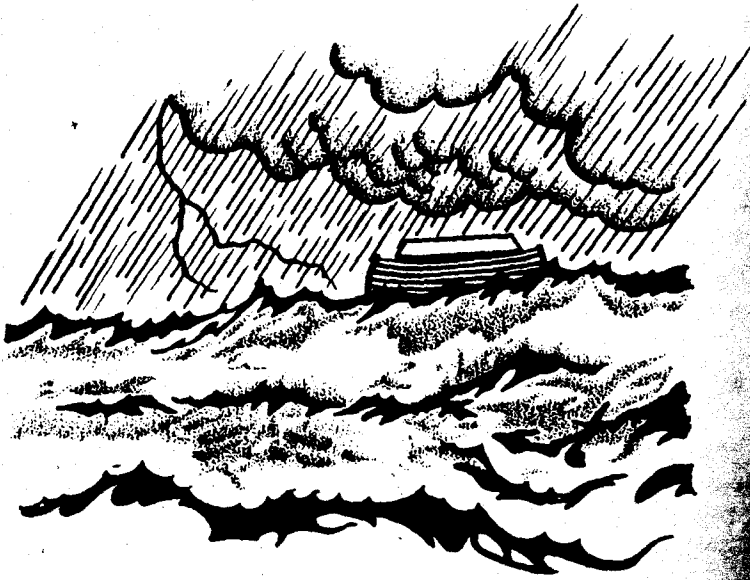
The Bible further tells us what took place as a result of the free choice that God gave man. We are given the account in the Book of Genesis of the fall of man, when Adam and Eve willfully chose to disobey God and surrender their will to Satan. Sin entered the world, and from that point on, was passed down from generation to generation. At the time of the fall, the whole creation fell with man and has continued to degenerate through the subsequent generations. The direction of the universe began to proceed in a direction from order to disorder. As a result of the sinful nature of man that began at the fall, the human race has been involved in terrible wickedness, corruption and perversion. God has repeatedly brought about catastrophic judgments upon the earth to judge man for his wickedness and sin.

The first major judgment the Bible mentions is the great flood of Noah. In order for us to better understand what happened to the original perfect creation, it is necessary for us to examine what the Bible says took place during this event.



## THE DESTRUCTION OF THE ORIGINAL CREATION

After the "fall of man", the perfect creation God had planned began to degenerate. As a result of the terrible wickedness and corruption which took place on the earth, God had no choice but to send judgment and bring destruction upon the original earth. The creation premise for the earth's origin and history is not complete unless we take into account the numerous catastrophic judgments of God upon sinful man.



*Figure 39:  
The flood of Noah was a global event which brought judgment and destruction upon the original creation.*

The first major catastrophe affecting the earth was the flood of Noah. (*Figure 39*) This global event completely devastated the original creation. There was a sudden destruction of plants and animals. Many kinds of life were completely destroyed. There was a sudden destruction of the most highly advanced civilization that has ever lived. The lush, global, subtropical environment that had existed over the entire planet was destroyed. There was a sudden rearrangement of the earth's geological features which took place on a global scale. Without question, the great flood of Noah did more to change the features of the planet earth, than any other event in history.

### The Events Of The Flood

Genesis chapters seven and eight identify the major events which took place during the flood. As we look at an overview of these events, it will give us a better understanding of what happened to the original earth. The Scriptures mention that at the time of the flood the following events occurred:

- 1 The windows of heaven were opened.
- 2 The fountains of the great deep broke up.
- 3 Rain occurred for forty days and forty nights.
- 4 Tidal wave activity occurred on a global basis.
- 5 Rising and sinking of the crust of the earth.

The Bible indicates God's wrath was poured out upon the earth as "the windows of heaven were opened". Throughout Scripture, when reference is made to "the windows of heaven", and the context regards judgment, it refers to material falling upon the earth from cosmic origin. (*Figure 40*) God, using His own laws of nature, has brought divine judgment upon the earth. He has brought about disturbances in the heavens affecting the stability of our earth. As the result of the close passage of other heavenly bodies near the earth, there have been tremendous gravitational and electromagnetic effects.

The flood description mentions one of the major occurrences as the fracturing of the earth's crust as "the fountains of

the great deep broke up". (*Figure 41*) This would trigger off volcanic eruptions on a global scale. Extreme amounts of volcanic ash, lava, super heated water and carbon dioxide, would be poured out all over the land mass and the ocean beds. Marine organisms would be rapidly caught and destroyed by volcanic and sedimentary deposits. On the land, plant and animal life would be caught and destroyed and covered over by thousands of feet of flood deposited layers. All manner of life would be mixed and scrambled together and quickly buried.

Associated with the flood events would be hot cosmic debris falling from the heavens. This kind of activity has happened at other periods of history when God has poured out "fire and brimstone" upon the earth. The prophet Isaiah describes the same kind of cosmic judgement being rained down when "the windows of heaven were opened" in Isaiah chapter 24, verses 17 and 18. Thus at the time of the flood, hot meteoric iron, cosmic hydrocarbon gasses, flaming tar and bitumin, would have been rained down upon the earth.

The canopy of water which surrounded the original earth would collapse during all of this activity. This would create a large portion of the flood waters covering the earth. Torrential rain would occur in most areas of the earth; thousands of feet of ice and snow would be deposited in the polar regions. Great depths of cosmic ice would also be quickly deposited around the magnetic poles of the earth. Polar ice caps would form suddenly, catching subtropical plant and animal life in a moment of time.

The earth's crust was greatly disturbed at this time, as land masses rose and sank. (*Figure 42*) Mountains were buckled up, and valleys sank. (Psalms 104:8 Living Bible) Entire civilizations were swallowed up into the earth. (Ezekiel 26: 19-20) Areas that were once ocean beds became deserts.

Tidal activity took place on a global basis over several months of time. (Genesis 8: 1, 3, 5) Waves would be ripping back and forth across the surface of the globe, carrying vegetation and animal material. All kinds of living material would

be scrambled together, mixed with volcanic ash, volcanic mud, and other debris. Tidal waves bearing dead plants and animals from land and sea would be laid down in horizontal flood deposited layers. Thousands of feet of deposition would occur in a very short period of time. Layer upon layer would form, as land masses rose and sank. (Figure 43) Vegetation and animal life would be scrambled together, torn and buried in the layers of the earth in no particular order. (Figure 44)

This global flood took place in a time period of less than a year. As a result of this great catastrophe, the original climate and environment was totally changed. Many varieties of plants and animals became extinct. Plant and animal life was buried in thousands of feet of volcanic deposits and sedimentary layers and quickly fossilized. Geological features over the entire face of the earth were altered.

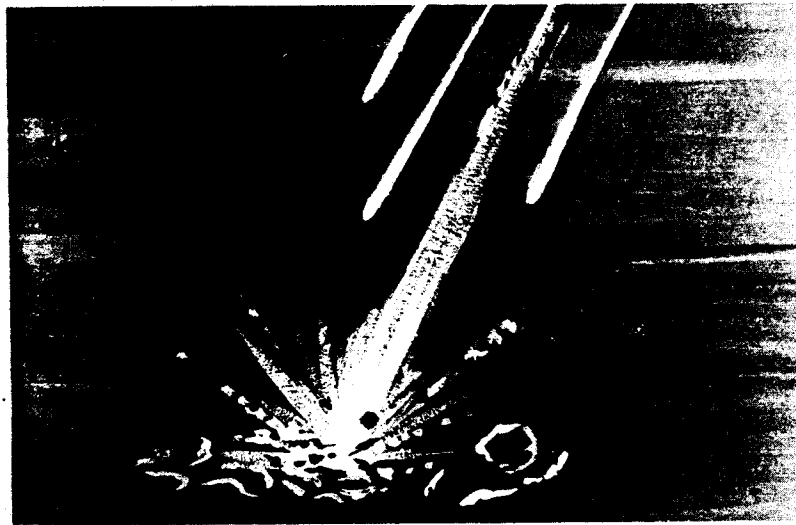
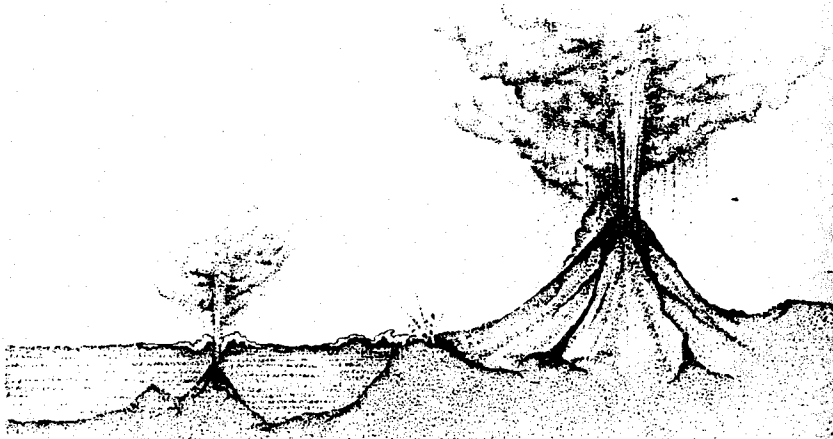


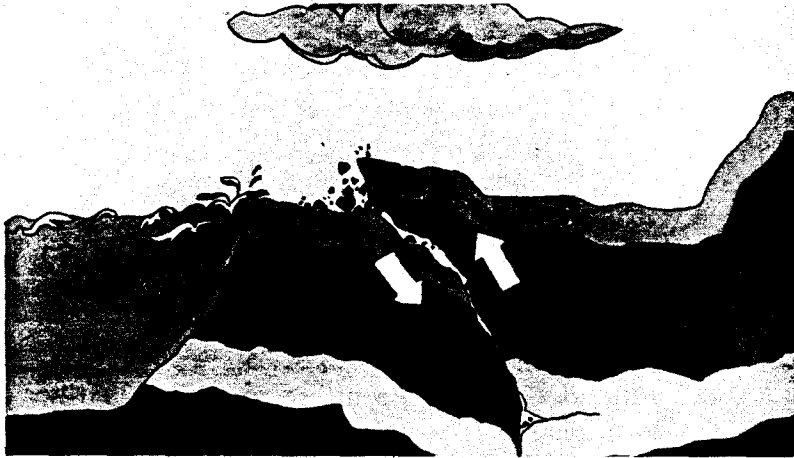
Figure 40:

*The phrase, "the windows of heaven were opened", refers to fire and brimstone material falling from the heavens.*



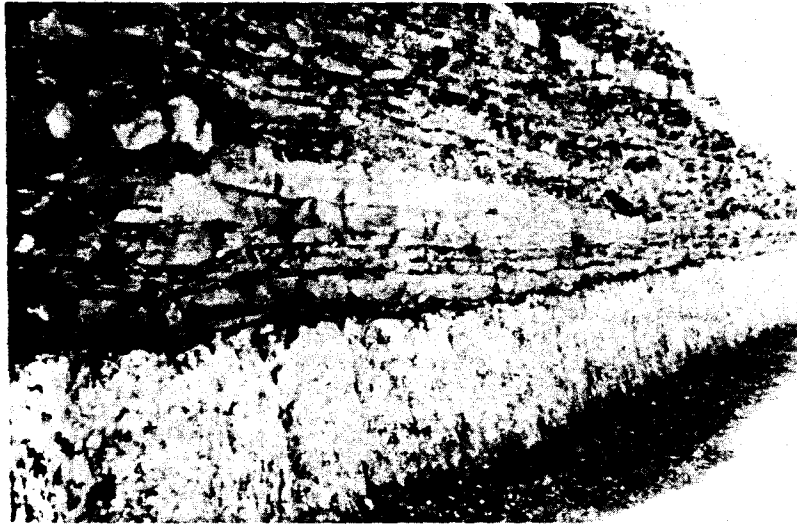
*Figure 41:*

*One of the major events at the time of the flood occurred when the "fountains of the great deep were broken up" (Genesis 7:11). The earth's crust fractured both on land and under the sea, creating volcanic activity on a global basis.*



*Figure 42:*

*The rising and sinking of land mass at the time of the flood, rearranged the earth's geological features.*



*Figure 43:*

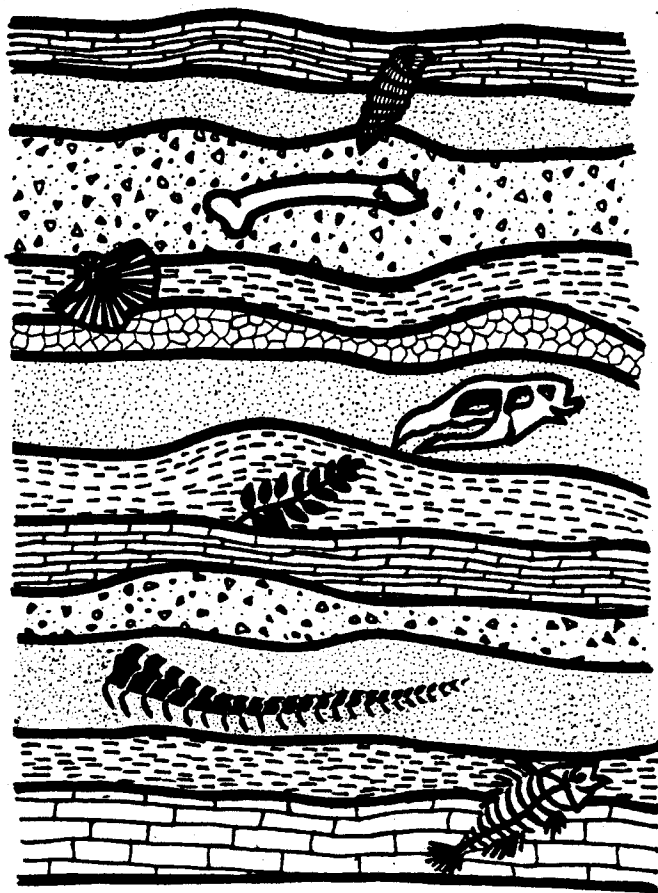
*Evolutionary geological theory suggests the earth's layers were formed as the result of millions of years of gradual deposition. The Biblical model claims the numerous layers of the earth are the product of catastrophic deposition of material over a short period of time.*

### **Other Catastrophic Events**

The great flood of Noah is only the first of a number of catastrophic judgments God has brought upon the earth in recent historical times. (*Figure 45*) The division of the continents took place shortly after the period of time when the Tower of Babel was constructed. Following this was the fiery destruction of Sodom and Gammorah. In the time period around 1500 B.C., there were global catastrophies associated with the Exodus and Joshua's long day.

Other catastrophic events took place in the 700-800 B.C. period, as recorded in the Books of Joel, Amos and Isaiah.

At each of these time periods, man has reached high peaks of Satanic influence and wickedness which God has had to judge. All of these catastrophies have had a part in further alterations to our planet, and must be considered as we study the Biblical account of the origin and history of the earth.



*Figure 44:*  
According to the Biblical model of the flood, all kinds of life would have been caught and destroyed in the layers of the earth. Fossils should not be found in a sequential order of simple to complex.

## BIBLICAL CHART OF MAN'S HISTORY

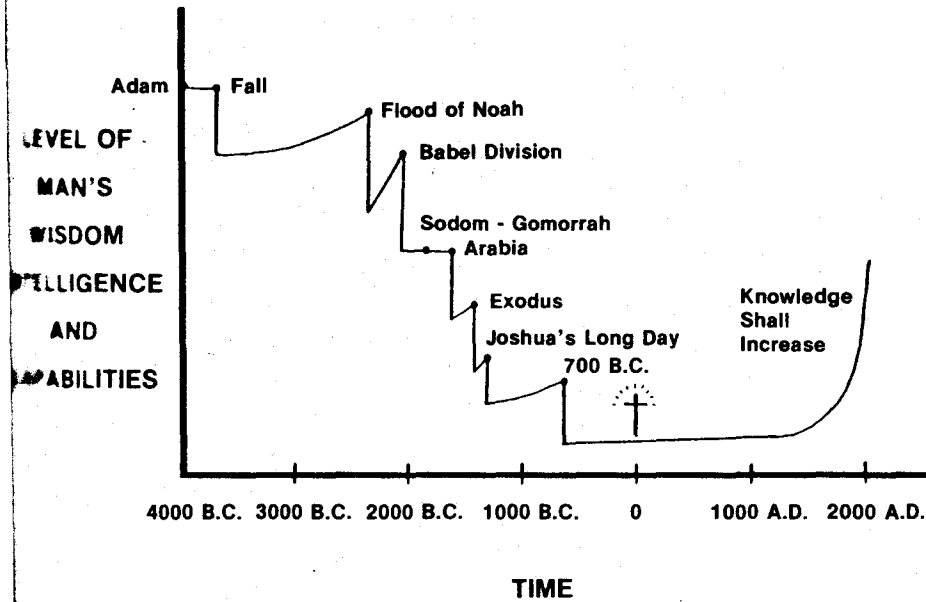


Figure 45:

The above chart representing approximately six thousand years of recorded time, illustrates the Biblical record of the history of man. God has used numerous catastrophic events to bring about judgment on high peaks of civilization which have been involved in wicked Satanic practises.